

Kasha Riddle
Phone: 604-803-7070
Mobile:
Fax:
Email: kashariddle@gmail.com

RE/MAX CREST REALTY
101-2609 Westview Drive
North Vancouver, BC

784 East 15th Street, North Vancouver, BC, V7L 2S4, Canada

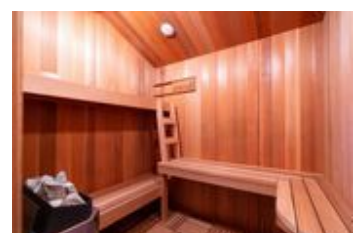


Property Value	\$1,989,000
Type	House
Style	Detached House
Parking	Single garage + side driveway
Living Area	3,113 sq.ft.
Lot Frontage	62 ft
Lot Depth	120 ft
Lot Size Area	7,500 sq.ft.
Bedrooms	4
Bathrooms	2 full

Description

Bright & spacious 2 level, 3,113 sqft, 4 bedroom Boulevard family home on a 7,500 sqft lot featuring NEWER ADDITIONS/RENOVATIONS in & out! Upper floor highlighted with gourmet kitchen boasting stainless steel appliances and granite cooktop Island. Large living/dining areas showcase vaulted ceilings with hemlock beams. Incredible 5pc bathroom reno. Massive covered entertainment sized patio complimented with a built in river rock BBQ. Masterbed room has a private wrap around deck. Main level contains flex 1 or 2 bedroom suite, rec room & wine cellar. Custom detached sauna & hot tub gazebo. Garage and lots of storage.*NEWER; Modern/sunken lights, built-in stereo, hardwood, fans, exterior paint, masonry walls with illumination, quality artificial turf, side driveway/extra parking. Suitable for family daycare. Quiet street; walk to shopping & schools and the Lonsdale corridor.









784 East 15th Street
North Vancouver, BC

RE/MAX
CREST REALTY

Kathie Riddle P.S.C.
604.263.1979
kathieriddle@realtor.ca

Maple Ridge

